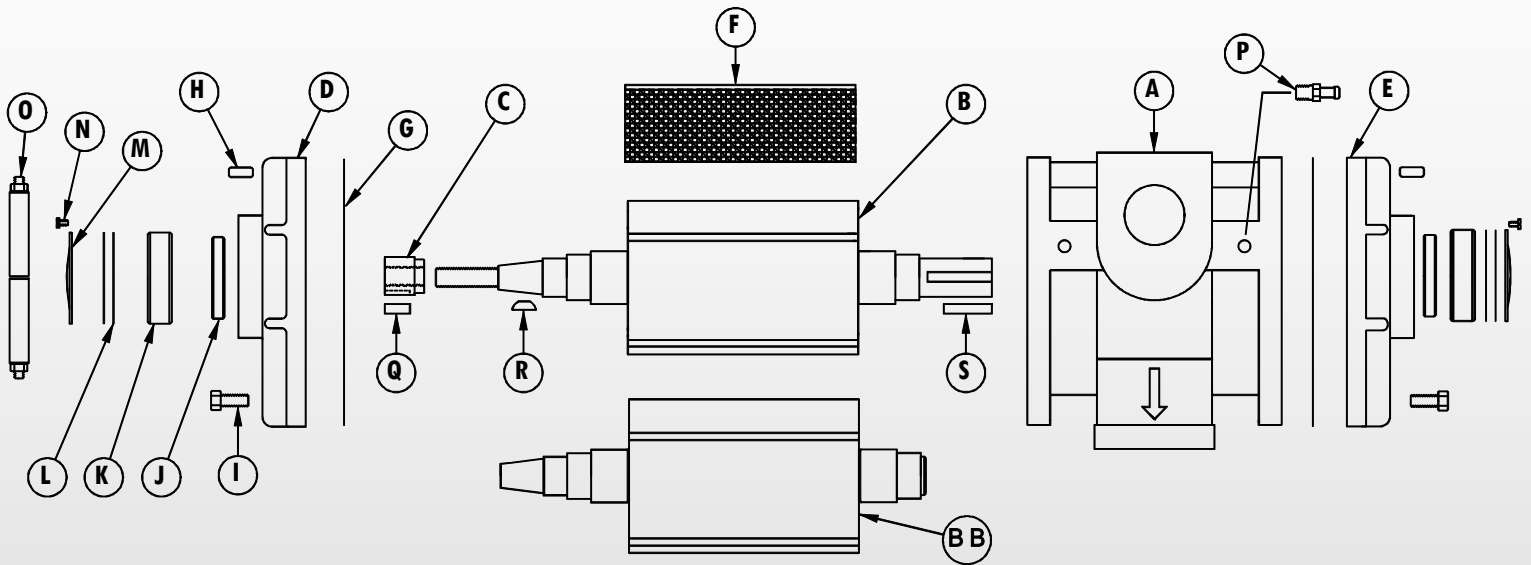




Super 6

MADE IN THE USA

TAPERED SHAFT WITH CLUTCH MOUNTING PLATE



ITEM	QTY	PART NUMBER	DESCRIPTION
A	1	HS06HD90LBS	#6 SUPER V.O. HOUSING
B	1	RT06TPLBSLH	#6 SUPER L.H. TAP. ROTOR
C	1	SH06LBSLH	LH THREADED STUB SHAFT
BB	1	RT06TPLB	#6 SUPER INT. TAP. ROTOR
D	1	PLF06OT-LC	#6 SUPER CW TAP END PLATE
E	1	PLF06O-LCC	#6 SUPER CCW END PLATE
F	3	VN06FB91L	#6 SUPER V.O. VANE
G	2	GSKLB0612	#6 SUPER HOUSING GASKET
H	4	PIN3612	1/4" X 5/8" DOWEL PIN
I	12	FS31075A	5/16-18 x 3/4" LG CAP SCREW
J	2	SE0612	SHAFT SEAL
K	2	BR066206A	6206 BEARING
L	SET	BRS06	BEARING SHIMS
M	2	BRC06	BEARING COVERS
N	12	FS19025	BEARING COVERS SCREWS
O	1	ELCL3045	CLUTCH MOUNTING PLATE
P	2	TO008	OIL JET
Q	1	KEY06LBS	1/4" X 3/4" LGTH KEY
R	1	KEYTAPLBS	WOODRUFF KEY
S	1	KEY06LBSA	1/4" X 1-1/4" LGTH KEY