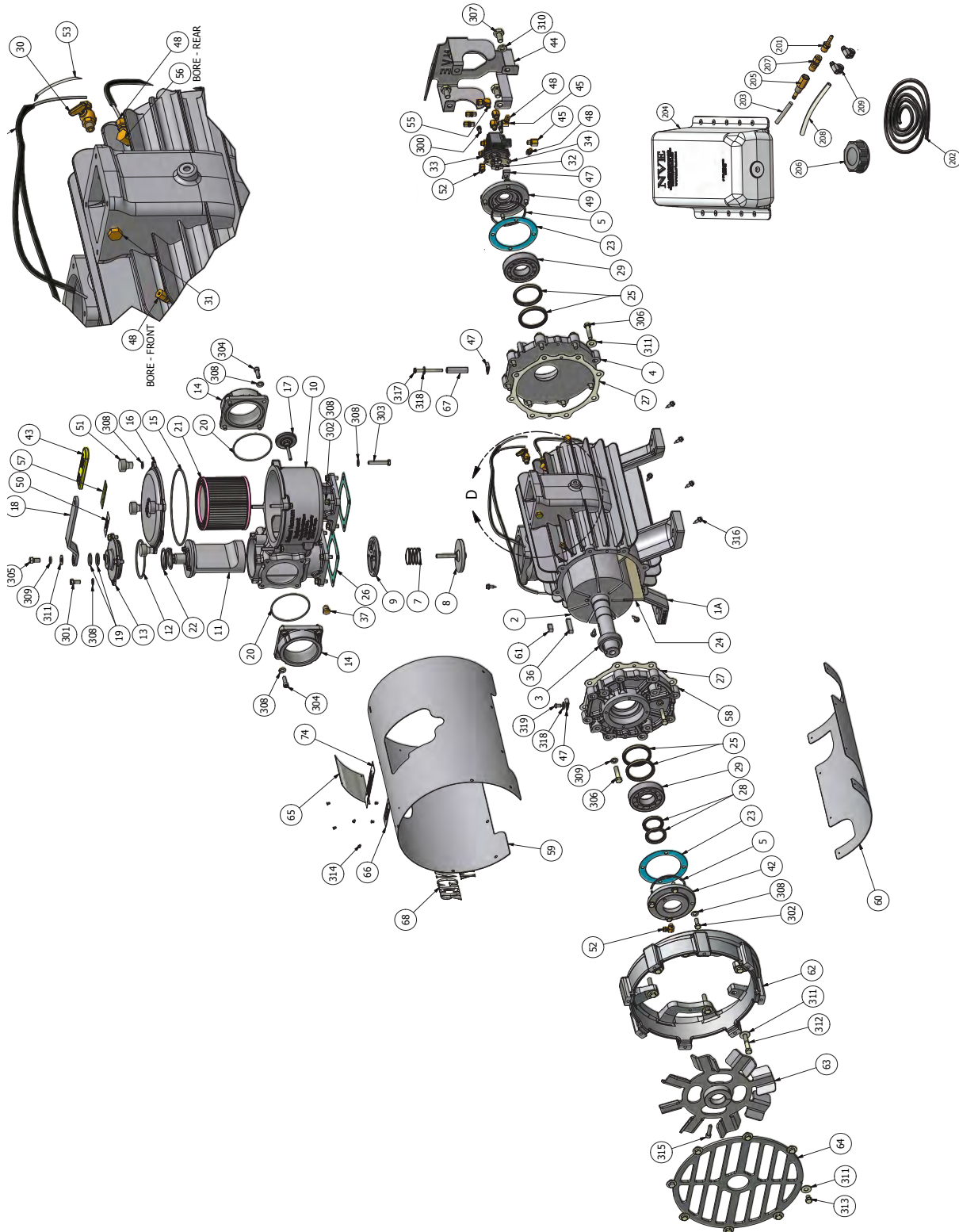


**NVE 607 Challenger Fan Cooled | Parts Diagram**



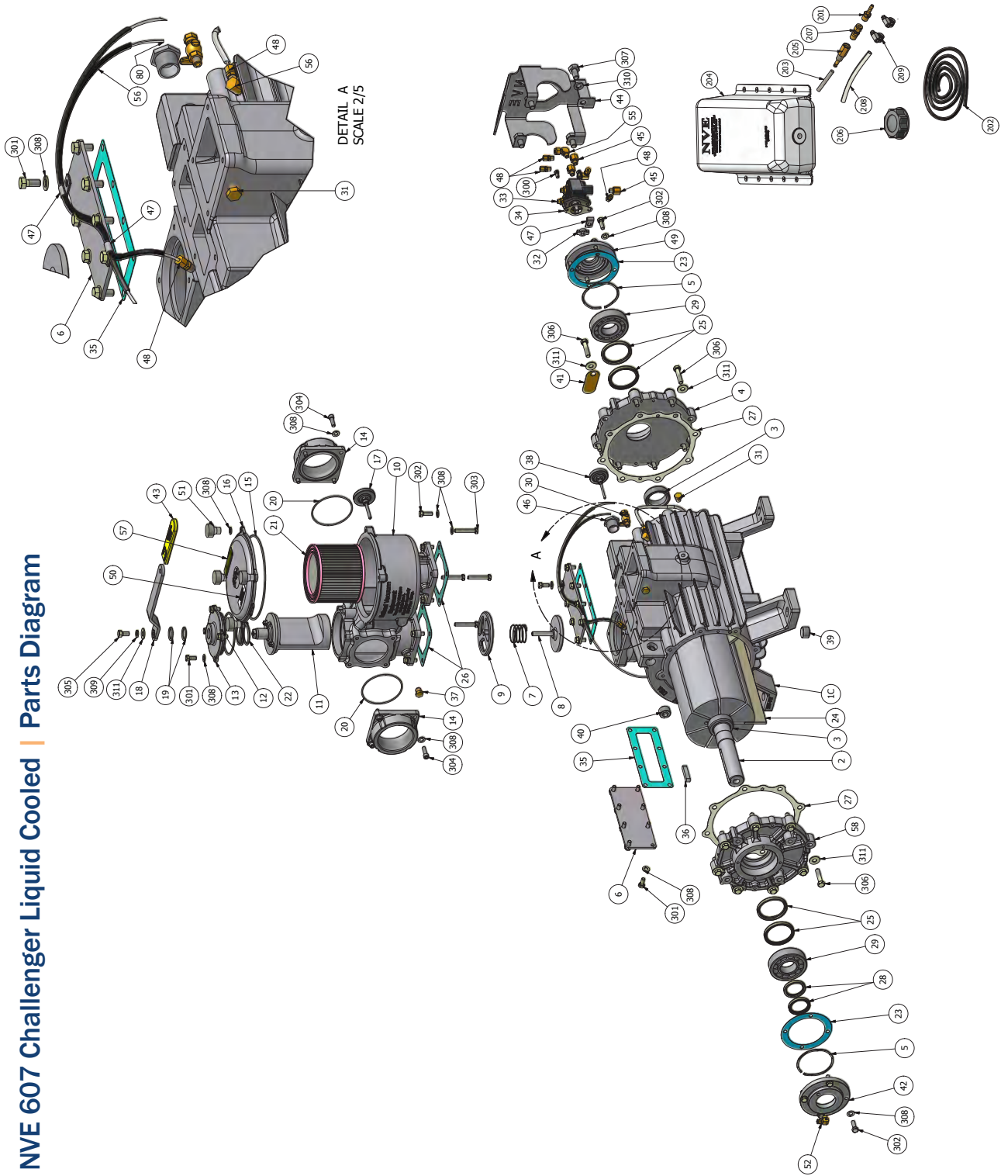
North America's Leading Manufacturer & Wholesaler of Industrial Vacuum Equipment

[www.natvac.com](http://www.natvac.com)

# HEAVY-DUTY CHALLENGER VACUUM PUMPS



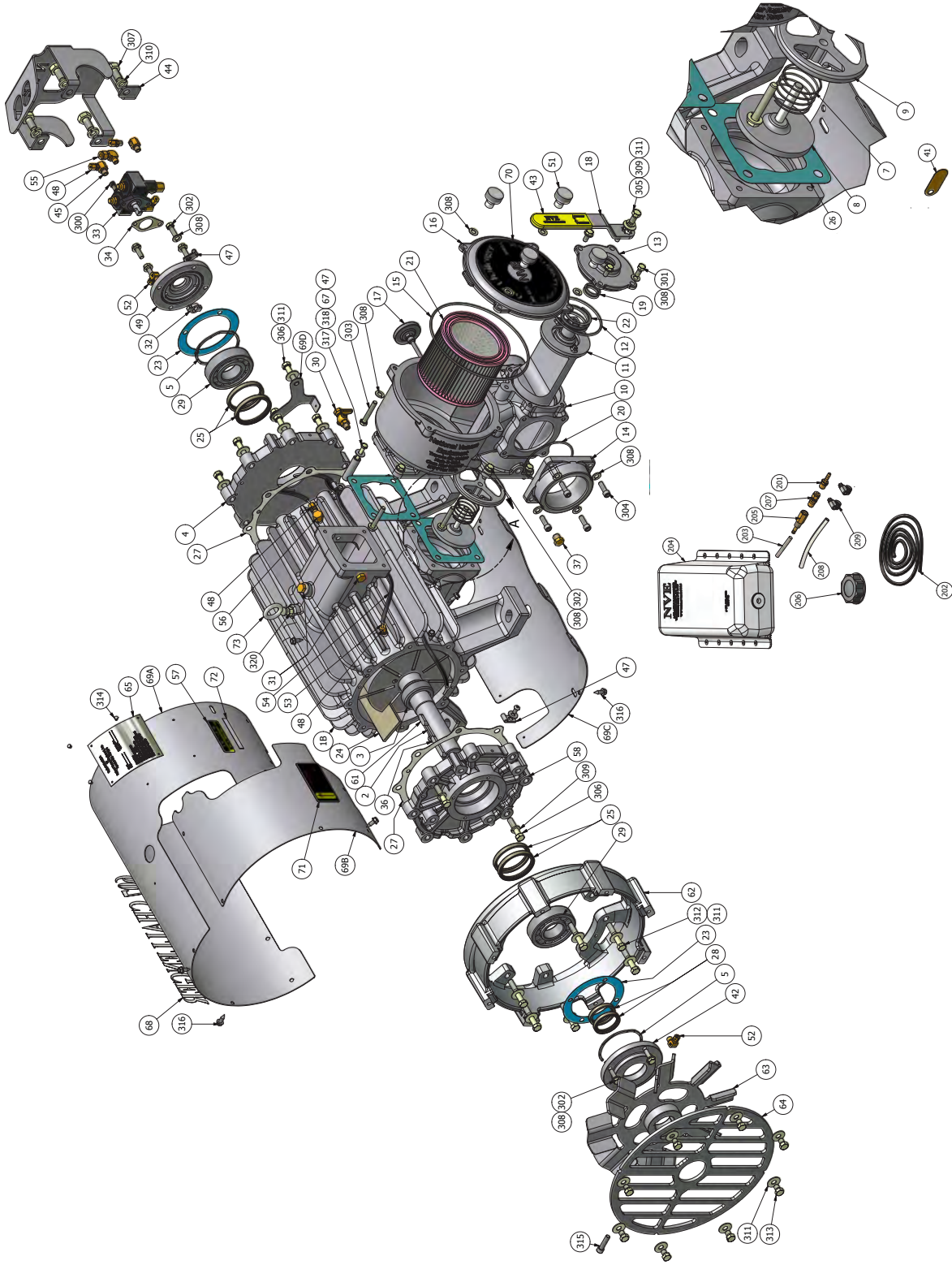
## NVE 607 Challenger Liquid Cooled | Parts Diagram



Toll Free 800-253-5500 | Toll Free 24-Hour Fax 800-998-6834 | P.O. Box 685 | Traverse City, MI 49685 USA

[www.natvac.com](http://www.natvac.com)

**NVE 607 SV Challenger Fan Cooled | Parts Diagram**



North America's Leading Manufacturer & Wholesaler of Industrial Vacuum Equipment

[www.natvac.com](http://www.natvac.com)

## NVE 607 Challenger Series | Parts List

ITEM	QTY	PART NUMBER	DESCRIPTION	WEIGHT	PRICE
1A	1	120-001-367	HOUSING, 367 PINNED ENDPLATE	138	1109.58
1B	1	120-001-607A	HOUSING, 607A MACHINED	147.83	1109.58
1C	1	120-001-367-L	HOUSING, 367 WATER COOLED	165	1330.79
2	1	120-005-367	ROTOR, HVY DTY 360 SLOTTING	128	787.50
3	2	120-009-367	SEAL SLEEVE, 360HD & 367	0.39	15.75
4	1	120-003-003 120-003-002	ENDPLATE, CCW MACHINED 607 (CW PUMP) ENDPLATE, CW MACHINED 607 (CCW PUMP)	11.97	162.53
5	2	120-045-001	SPRING, WAVE WIRE 3.50"	0.01	2.98
6	2	120-021-367	COVER PLATE, 367 WATER JACKET	1.13	21.49
7	1	120-046-367	SPRING, CHECK VALVE 367	0.01	11.67
8	1	120-041-367	POPPET, 3" CHECK VALVE	0.90	47.89
9	1	120-042-367	RETAINER RING, 3" (360 & 367)	0.65	45.14
10	1	120-320-001	HOUSING, FILTER-INTEGRAL	28	255.87
11	1	120-062-001	PLUG, 4-WAY, 607	4.40	50.98
12	1	120-064-003	O-RING, 2-240 VITON	0.01	1.76
13	1	120-065-002	TOWER, 3" RM MACHINED	1.54	19.12
14	2	120-063-367	FLANGE, 3" NPT	2.82	43.62
15	1	120-064-004	O-RING, 2-265 VITON	0.01	3.75
16	1	120-310-001	COVER, FILTER 607/866	4.40	103.95
17	1	120-220	THERMOMETER, 50- 400 DEG, 2" FACE, 2.5" STEM, 1/4" - 18NPT	0.20	61.95
18	1	120-060-001	HANDLE, 367 GEN 2	0.83	17.85
19	2	120-064-002	O-RING, 2-214 VITON	0.01	1.24
20	2	120-064-001	O-RING, 2-154 VITON	0.01	1.55
21	1	120-314-001	FILTER ELEMENT, 60 MESH	0.08	83.79
22	1	120-045	4-WAY FV SPRING (COMPRESSED)	0.15	10.29
23	2	120-055-367	GASKET, FRONT BEARING COVER	0.01	2.10
24	7	120-007-367	VANE: 350, 360 & 367	0.35	79.95
25	4	120-018-367	SEAL, 60X72X8 VITON SGL LIP	0.05	21.61
26	2	120-039-367	GASKET, FLANGE INT/EXH	0.01	2.05
27	2	120-004-367	GASKET, 367 END PLATE	0.01	.79
28	2	120-053	SEAL, 40X52X7 VITON	0.01	9.19
29	2	120-019-367	BEARING, NJ 308 L1308B	1.58	26.25
30	1	120-102	VALVE, DRAIN 1/8" NPT	0.05	12.08
31	2	120-058	PLUG, BRASS 1/8" NPT, HEX HD.	0.04	1.58
32	1	320-LF8	DRIVE TAB	0.03	2.64
33	1	320-LW32BD 320-LW32BS	OIL PUMP, 4 PORT (CW PUMP) OIL PUMP, 4 PORT (CCW PUMP)	2.32	488.97
34	1	320-R31	GASKET, OIL PUMP	0.01	.89
35	2	120-022-367	GASKET, 367/506 COVER PLATE	0.01	2.89
36	1	120-006	KEY, 3/8" X3/8" X 2	0.08	2.89
37	1	120-059	PLUG, BRASS 1/4" NPT, HEX HD.	0.05	1.73

Toll Free 800-253-5500 | Toll Free 24-Hour Fax 800-998-6834 | P.O. Box 685 | Traverse City, MI 49685 USA

[www.natvac.com](http://www.natvac.com)

**NVE 607 Challenger Series | Parts List *Continued***

ITEM	QTY	PART NUMBER	DESCRIPTION	WEIGHT	PRICE
38	1	120-220-1	1/8" NPT THERMOMETER 220 F	0.15	51.59
39	1	120-047-1	DRAIN PLUG, 3/4" NPT MAGNETIC	0.12	2.36
40	1	120-047	DRAIN PLUG, 3/4" NPT	0.10	1.58
41	1	120-107	TAG, SERIAL NUMBER, BRASS	0.01	1.04
42	1	120-054-001	BEARING COVER, 367P	1.99	31.50
43	1	120-060-002	GRIP, HANDLE W/ LOGO	0.01	2.59
44	1	120-079-001	GUARD, OIL PUMP 607 POWDERCOAT	3.40	25.20
45	5	320-408-001	ADAPTER, ELBOW 1/8 BSPTM-NTPF	0.05	5.58
46	1	120-049	BUSHING, 3/4"NPTX1/8"NPT	0.19	17.47
47	3 4	320-409-003	P-CLIP, OIL LINE 1/4" X 5/16 (100-607-FD, 100-607-FS, 100-607A-FS & 100-607-LD) P-CLIP, OIL LINE 1/4" X 5/16 (100-607-LS)	0.01	1.31
48	6	320-408-004	FITTING, STRT 1/8 NPT-TUBE	0.05	6.83
49	1	120-054-002	BEARING COVER, OIL PUMP 607	1.85	35.70
50	1	120-101-367-D 120-101-367-S	DECAL, RPM-CW 607 DECAL, RPM-CCW 607	.01	1.04
51	4	120-312-002	KNOB, 5/16-18UNC	0.60	8.66
52	2	320-408-005	FITTING, ELBOW 1/8 NPT-TUBE	0.05	5.34
53	8'	320-407-001	TUBE, 1/8" OD PFA	.01	3.00
54	7'	320-409-002	OIL LINE PROTECTOR, 1/4" FIBERGLASS	.01	1.26
55	1	310-LP5	1/4" HOSE BARB X 1/8" NPT STRAIGHT	.01	1.00
56	1	320-408-002	ADAPTER, ELBOW 1/8 MNPT-FNPT	0.05	5.58
57	1	120-103-367	DECAL, IMPORTANT 375F	0.01	.79
58	1	120-003-002 120-003-003	ENDPLATE, CW MACHINED 607 (CW PUMP) ENDPLATE, CCW MACHINED 607 (CCW PUMP)	11.97	162.53
59	1	120-071-367-D 120-071-367-S	SHROUD, 367 TOP CW SHROUD, 367 TOP CCW	8.89	59.96
60	1	120-070-367	SHROUD, LOWER, 367	3.25	51.40
61	1	120-076	KEY, 3/8" X 3/8" X 1"	0.04	2.63
62	1	120-074-001	FAN SHROUD, 367 SHORT	8.37	183.75
63	1	120-083-002 120-083-001	FAN ASSY, CW 607 FAN ASSY, CWC 607	4.40	131.25
64	1	120-073	FAN GUARD, 367, 460, 466 & 506	1.42	45.18
65	1	120-105	TAG, LARGE, NVE SERIAL NUMBER	0.02	10.49
66	1	120-106-367-D	PLATE, CW	0.04	4.65
67	1	120-077-367	SHROUD SUPPORT, 360 & 367	0.05	8.99
68	1	120-100-607	DECAL, 607 CHALLENGER HD	0.00	3.68
69	1	120-071-607A-S	TIN KIT, 607A	12.33	---
69A	1	120-071-607A-S-1	TIN, UPPER 1 CCW - 607A	7.10	---
69B	1	120-071-607A-S-2	TIN, UPPER 2 CCW - 607A	2.17	---
69C	1	120-071-607A-S-3	SHROUD, LOWER, 607A	2.96	---
69D	1	120-071-607A-S-4	BRACKET, 607A TINS	0.10	---
70	1	120-100-607A	DECAL, 607 SIDE MOUNT	0.01	---
71	1	120-101-607A-S	DECAL, WARNING 607A	0.00	---
72	1	120-101-001	DECAL, NATVAC.COM	0.00	---

North America's Leading Manufacturer & Wholesaler of Industrial Vacuum Equipment

[www.natvac.com](http://www.natvac.com)



## NVE 607 Challenger Series | Parts List *Continued*

ITEM	QTY	PART NUMBER	DESCRIPTION	WEIGHT	PRICE
73	1	120-351-001	LIFT EYE, 3/8-16 PLATED	0.15	---
74	1	120-104-367	DECAL, WARNING-GUARDS	0.00	1.16
200	1	310-LP5	HOSE BARB TO MALE PIPE	0.01	1.00
201	1	310-LP6	HOSE BARB, 1/4 TO 1/4NPT STRT	---	4.15
202	5	320-407-003	OIL LINE, BLK 1/4" ID 30R7	---	1.43
203	1	320-083-009	OIL TANK FILTER, 100 MESH	---	3.75
204	1	320-082-001	OIL TANK, 5QT, W/LOGO	1.65	33.50
205	1	320-083-010	FILTER FITTING, OIL TANK 1/4 NPT	.107	16.52
206	1	320-083-002	CAP, OIL TANK, BLACK 2 1/4"	.1016	7.13
207	1	320-408-010	FITTING, 1/4" TUBE X 1/4" MNPT	---	6.81
208	1	320-R102-6IN	OIL LINE, 3/8" X 1/4" ID X 6" LG	.05	2.50
209	2	416-025-1WC	CLAMP, WORM, .250" DIA	---	1.14
300	2	SHCS - 1/4-20 UNC X 0.50	SHCS - 1/4-20 UNC X 0.50	---	---
301	4	HHCS - 5/16-18 UNC X 0.75	HHCS - 5/16-18 UNC X 0.75	---	---
302	16	HHCS - 5/16-18 UNC X 1	HHCS - 5/16-18 UNC X 1	---	---
303	4	HHCS - 5/16-18 UNC X 2 FT	HHCS - 5/16-18 UNC X 2 FULL THREAD	0.06	---
304	8	SHCS - 5/16-18 UNC X 1	SHCS - 5/16-18 UNC X 1	0.03	---
305	1	HHCS - 3/8-16 UNC x 0.75	HHCS - 3/8-16 UNC X 0.75	0.04	---
306	10	HHCS - 3/8-16 UNC X 1.75	HHCS - 3/8-16 UNC X 1.75	0.08	---
307	4	HHCS - 1/2-13 UNC X 1.00	HHCS - 1/2-13 UNC X 1.00	0.12	---
308	36	LW - 5/16	LOCK WASHER, 5/16	0.00	---
309	3	LW - 3/8	LOCK WASHER, 3/8"	0.01	---
310	4	LW - 1/2	LOCK WASHER, 1/2	0.02	---
311	23	FW - 3/8	FLAT WASHER, 3/8"	0.01	---
312	6	HHCS - 3/8-16 UNC X 2.25	HHCS - 3/8-16 UNC X 2.25	0.09	---
313	8	HHCS - 3/8-16 UNC X 0.50	HHCS - 3/8-16 UNC X 0.50	0.04	---
314	4	RVT 1/8 D X 1/8L	BLIND RIVET, 1/8 DIA X 1/8 GRIP, ALUM	0.00	---
315	1	SHCS - 5/16-24 UNF X 1.25	SHCS - 5/16-24 UNF X 1.25	0.04	---
316	14	TAPSCR - 1/4-14 X 0.75	HEX HEAD SELF TAPPING SCREW 1/4-14	0.02	---
317	1	HHCS 1/4-20 UNC X 2.75	HHCS 1/4-20 UNC X 2.75	0.05	---
318	2	FW - 1/4 USS	FLAT WASHER - 1/4" USS	0.01	---
319	1	BHCS - 1/4-20 UNC X 0.50	BHCS - 1/4-20 UNC X 0.50	0.01	---
320	1	HEX NUT - 3/8 UNC	HEX NUT - 3/8 UNC	0.02	---