

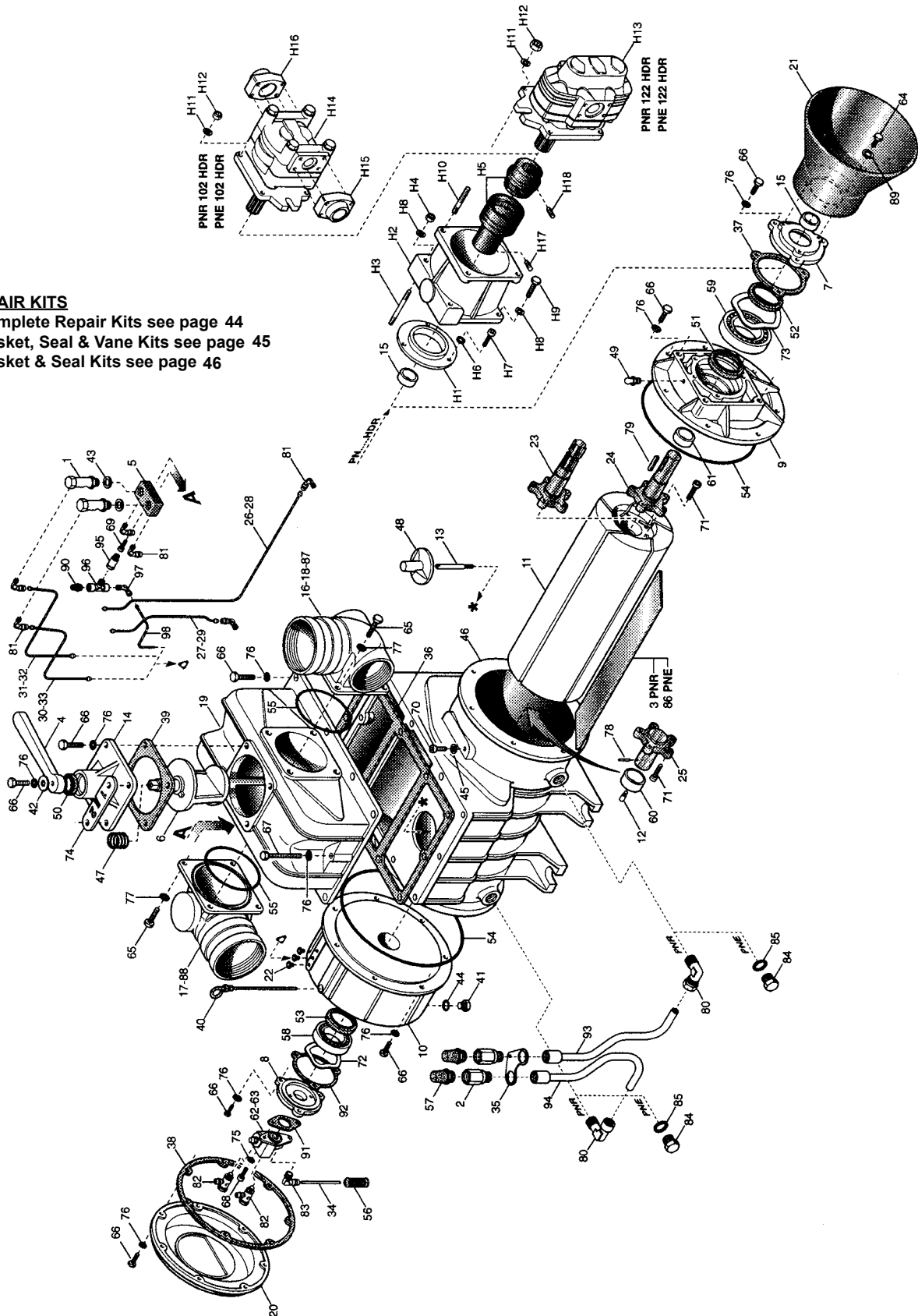
PNR102-122 PARTS BREAKDOWN



PNR102-122 PARTS BREAKDOWN

REPAIR KITS

- Complete Repair Kits see page 44
- Gasket, Seal & Vane Kits see page 45
- Gasket & Seal Kits see page 46



www.chandlerequipment.com

Due to unforeseeable market fluctuations, prices are subject to change without notice.



Pos.	Code	Description	Qty.
1	1401200700	Oil dripper automatic lubrication	2
2	1493300200	Air injection valve PNR	2
3	1601605900	Vane PNR 102	5
	1601606000	Vane PNR 122	5
4	1605500000	Handle R-PNR-PNE	1
5	1508100000	Distributor PR-PNR-PNE	1
6	1608501800	Conveyor PNR-PNE 102-122	1
7	1610508200	Flange R-PNR-PNE 102-122-142 D	1
8	1610508500	Auto lube pump flange R-PNR-PNE	1
9	1610508600	Flange PNR-PNE 102-122 D	1
10	1612503400	Oil tank PNR-PNE 102-122	1
11	1621503500	Rotor PNR-PNE 102	1
	1621503600	Rotor PNR-PNE 122	1
12	1622002600	Shaft M10	1
13	1622007800	Check valve shaft PNR-PNE 72-82-102-122	1
14	1623100500	Conveyor cap PN-PNR-PNE 102-122	1
15	1626001100	Bushing PNR-PNE 102-122 D	1
16	1627102400	Conveyor ø 100	1-2
17	1627102700	Conveyor ø 80	1
18	1627102800	Conveyor ø 76	1
19	1627504400	Manifold PNR-PNE 102-122	1
20	1640101200	Oil tank cap PNR-PNE 102-122	1
21	1642600100	Drive shaft protection	1
22	1642600000	Pipeline protection	3
23	1650014600	Front splined shaft PNR-PNE 102-122 D	1
24	1650014700	Front smooth shaft PNR-PNE 102-122 D	1
25	1650014800	Rear shaft PNR-PNE 102-122	1
26	1663038800	Front lubricating line PNR-PNE 102 D lh/M rh	1
	1663040000	Front lubricating line PNR-PNE 122 D lh/M rh	1
27	1663038900	Rear lubricating line PNR-PNE 102 D lh/M rh	1
	1663040100	Rear lubricating line PNR-PNE 122 D lh/M rh	1
28	1663039200	Front lubricating line PNR-PNE 102 D rh/M lh	1
	1663040400	Front lubricating line PNR-PNE 122 D rh/M lh	1
29	1663039300	Rear lubricating line PNR-PNE 102 D rh/M lh	1
	1663040500	Rear lubricating line PNR-PNE 122 D rh/M lh	1
30	1663039400	Internal oil dripper line PNR-PNE 102 D lh/M rh	1
	1663040600	Internal oil dripper line PNR-PNE 122 D lh/M rh	1
31	1663039500	External oil dripper line PNR-PNE 102 D lh/M rh1	1
	1663040700	External oil dripper line PNR-PNE 122 D lh/M rh	1
32	1663039600	External oil dripper line PNR-PNE 102 D rh/M lh	1
	1663040800	External oil dripper line PNR-PNE 122 D rh/M lh	1
33	1663039700	Internal oil dripper line PNR-PNE 102 D rh/M lh	1
	1663040900	Internal oil dripper line PNR-PNE 122 D rh/M lh	1
34	1663041100	Suction line for auto lube pump PNR-PNE 102-122	1
35	1681006900	Air injection pipes bracket PNR 122	1
	1681007000	Air injection pipes bracket PNR 102	1
36	1680608900	Manifold gasket PNR-PNE 102-122	1
37	1680707300	Flange gasket PNR-PNE 102-122-142 D	1
38	1680707700	Oil tank gasket PNR-PNE 102-122	1
39	1680707800	Conveyor gasket PNR-PNE 102-122	1
40	1683600300	Oil stick	1
41	1684000000	Plug G3/8	1
42	1685002800	Washer 30x8,5x4	1
43	1685100000	Alu washer 14x20x1,5	2
44	1685100200	Alu washer 17x22x1,5	1
45	1685100800	Alu washer 8x14x1,5	1
46	1687505900	Housing PNR-PNE 102	1
	1687506000	Housing PNR-PNE 122	1
47	1691000000	Conveyor spring	1
48	1693500400	Check valve PNR-PNE 102-122	1
49	4022100010	Greasing nipple M10x1	1
50	4022200030	Seal 41x27x10	1
51	4022200113	Seal 70x55x15	1
52	4022200044	Seal 65x45x8	1
53	4022200111	Seal 72x48x15	1
54	4022200309	OR 4875	2
55	4022200310	OR 6362	2(3)
56	4022300001	Nylon filter Ø6	1
57	4022301004	Silencer-filter 3/4"	2

Pos.	Code	Description	Qty.
58	4023100040	Bearing 6308	1
59	4023100046	Bearing 6309	1
60	4023130020	Bushing 48x40x22	1
61	4023130035	Bushing 55x45x22	1
62	4024251000	Automatic lubricating pump (cw rotation)	1
63	4024251500	Automatic lubricating pump (ccw rotation)	1
64	4026101404	Screw M8x12 galvanized	3
65	4026102807	Screw M8x25 galvanized	(4)
66	4026107110	Screw M8x25	40
67	4026107117	Screw M8x60	2
68	4026120304	Screw M6x16	2
69	4026120300	Screw M6x14	1
70	4026120400	Screw M8x12	1
71	1672001600	PNR rotor screw M10	10
72	4026300020	Compensation ring Ø90	1
73	4026300025	Compensation ring Ø100	1
74	1681006800	Plate vac-press PNR-PNE 102-122	1
75	4026350908	Washer M6	2
76	4026350909	Washer M84	2
77	4026350606	Grower washer M88	(12)
78	4026414617	Pin 3x40 (*)	1
79	4026501006	Tab 12x8x56	1
80	4026701310	Fitting G1/2	2
81	4026706000	Fitting 90°Ø4-1/8	6
82	4026706101	Fitting Ø4-1/8	2
83	4026706003	Fitting 90°Ø6-1/8	1
84	4026904001	Plug G1/2	2
85	4026359003	Alu washer 21,5x26x1,5	2
86	1601605500	Vane PNE 102	5
	1601605600	Vane PNE 122	5
87	1627102500	Conveyor with safety valve connection	(1)
88	1627102600	Conveyor	(1)
89	4026356002	Flat washer M8 galvanized	3
90	4022301001	Oil block filter G 1/4	1
91	1680609700	Oil pump gasket	1
92	1680609800	Oil pump flange gasket	1
93	1563007900	Air injection pipe r.	1
94	1563008000	Air injection pipe l.	1
95	4026705702	Oil drain extension	1
96	4026702502	Oil drain T fitting	1
97	4026706004	Fitting 90°G1/4 ø6	1
98	1663043300	Oil drain line PNR 102 D rh	1
	1663043400	Oil drain line PNR 102 D lh	1
	1663043500	Oil drain line PNR 122 D rh	1
	1663043600	Oil drain line PNR 122 D lh	1

(*): on models with ccw (left hand) rotation

PNR-PNE 102-122 HDR

H1	1610021600	Centering flange PNR-PNE 102-122-142 HDR1	
H2	1612501000	Bracket PNR-PNE ... HDR	1
H3	4026171211	Stud screw M12x80	2
H4	4026305508	Nut M12	2
H5	1470102300	Coupling PNR 102-122-142 HDR	1
H6	4026350909	Washer M8	3
H7	4026120403	Screw M8x20	3
H8	4026350609	Grower washer M12	4
H9	4026107313	Screw M12x40	2
H10	4026171304	Stud screw M14x40	4
H11	4026350610	Grower washer M14	4
H12	4026300808	Nut M14	4
H13	4024107001	Motor PNR-PNE 122 HDR	1
H14	4024107009	Motor PNR-PNE 102 HDR	1
H15	4026711003	Flange G1 1/4	1
H16	4026711004	Flange G1 1/2	1
H17	4026136003	Dowel pin M8x8	1
H18	4026136006	Dowel pin M8x14	1
	1892002700	Gaskets kit PNR-PNE 102-122 D	1